

# Canola Insect Pests

**Jim B. Davis**

**University of Idaho**  
College of Agricultural and Life Sciences



# Winter Canola, fall







# **Flea Beetle**

**Crucifer Flea Beetle**

**Striped Flea Beetle**

**Hop Flea Beetle**

# Flea Beetle



## Seed Treatments

Helix Xtra

Helix Vibrance

Prosper 400

Prosper Evergol

Cruiser 5FS

Gaucho 600

Imidacloprid 5SC













# Cabbage Aphid





# Grasshoppers

**Can be a problem in new winter canola stands in the late summer.**

**Scout your fields regularly...**





# Winter Canola, spring





# Cabbage Seedpod Weevil





# Cabbage Seedpod Weevil



**Primarily a winter canola pest.**

**Threshold is 2 to 4 weevils per 180° sweep.**

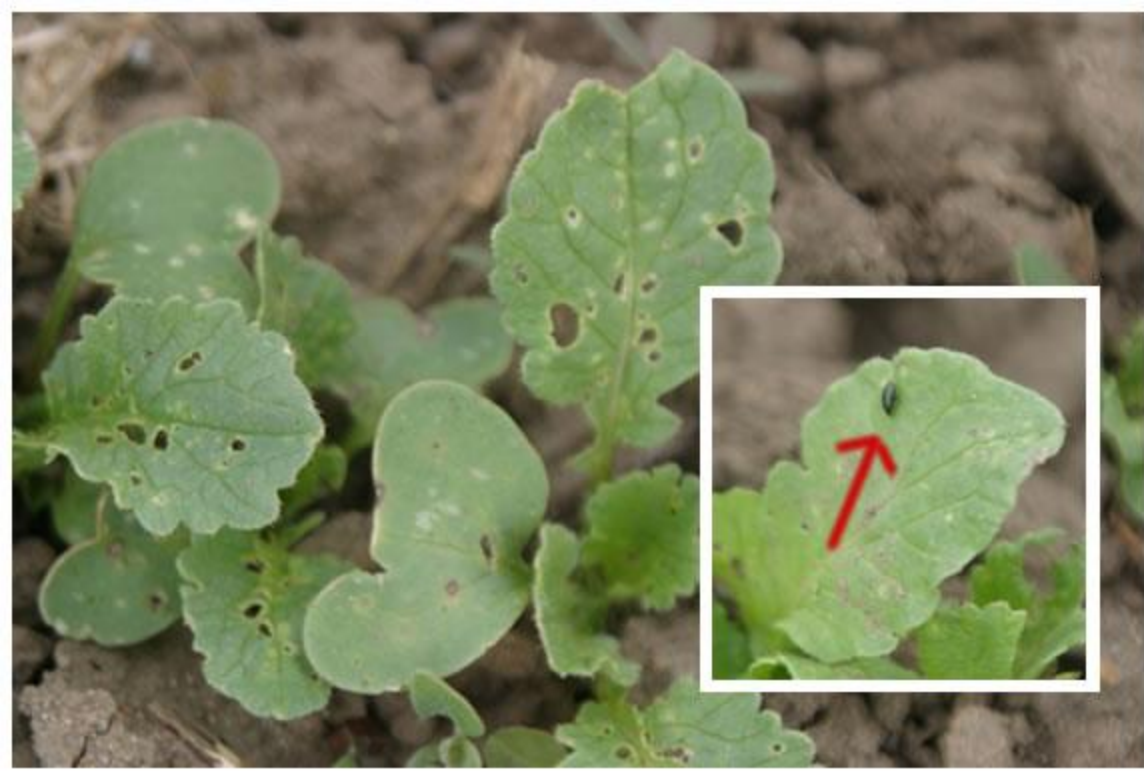


# Spring Canola





# Flea Beetle



## Seed Treatments

Helix Xtra

Helix Vibrance

Prosper 400

Prosper Evergol

Cruiser 5FS

Gaucho 600

Imidacloprid 5SC



## **Flea Beetle**

**Rescue foliar  
applications**

**Scout during wet springs even with seed trts.**

**Scout every 2 to 3 days in warm weather.**

**Spray at 20% -25% defoliation.**

**Youtube "Flea beetle management."**











# Cutworms

**Potentially  
devastating  
to seedlings.**





# Cutworms

**Cutworms are nocturnal.**

**Scout regularly at crop emergence.**

**Foliar insecticides available.**

**Spray late evening, at night,  
or early morning before sunrise.**



# Diamondback Moth



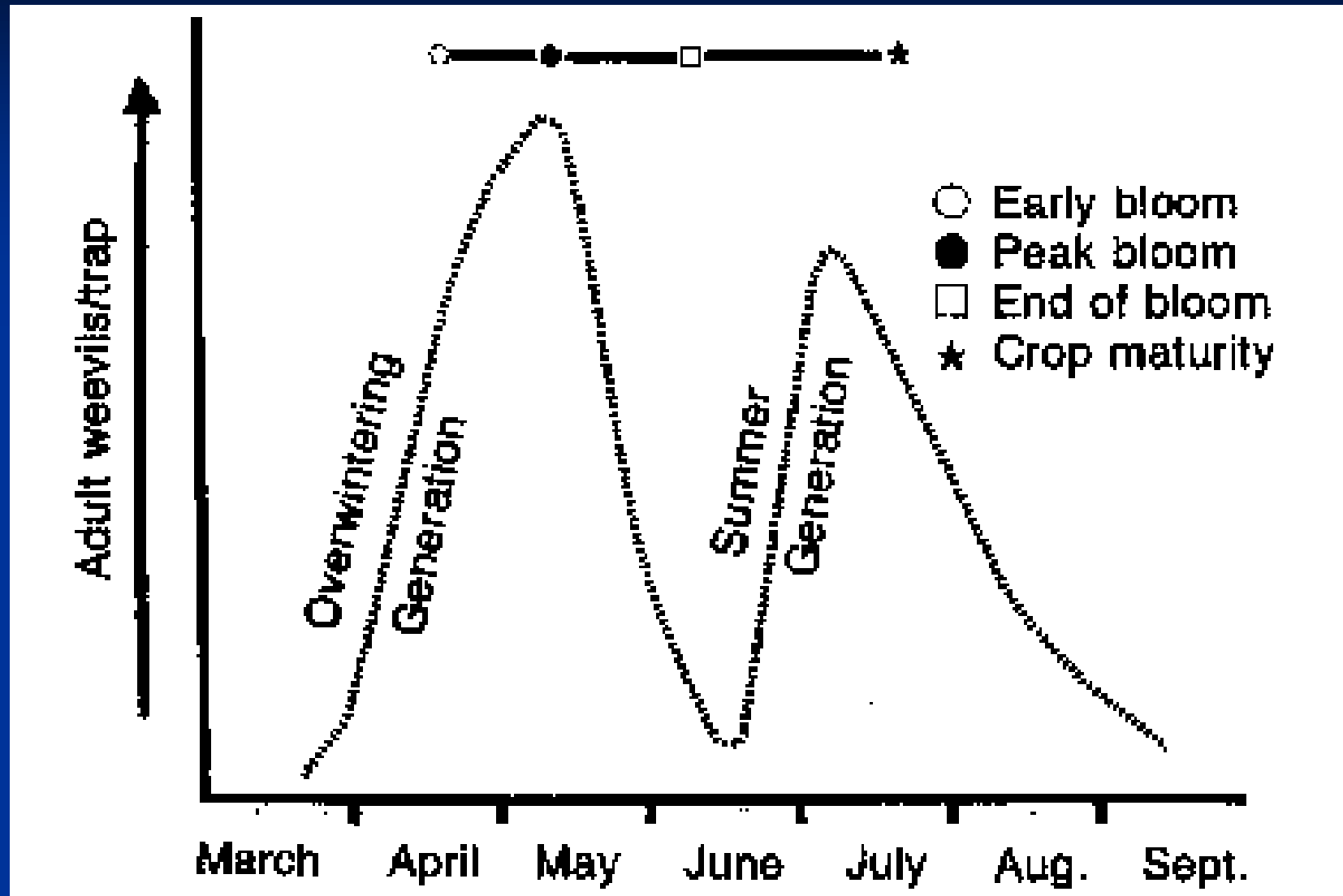
**Diamondback Moth Larvae**  
**10-15 per sq ft, or 10 per plant**

# Cabbage Seedpod Weevil





# Cabbage Seedpod Weevil



**Don't spray for new adults in July.**

# Cabbage Aphid





# Cabbage Aphid



## Threshold

- 1 in 5 flower stalks infested.
- Look among unopened flower buds.





# Cabbage Aphid

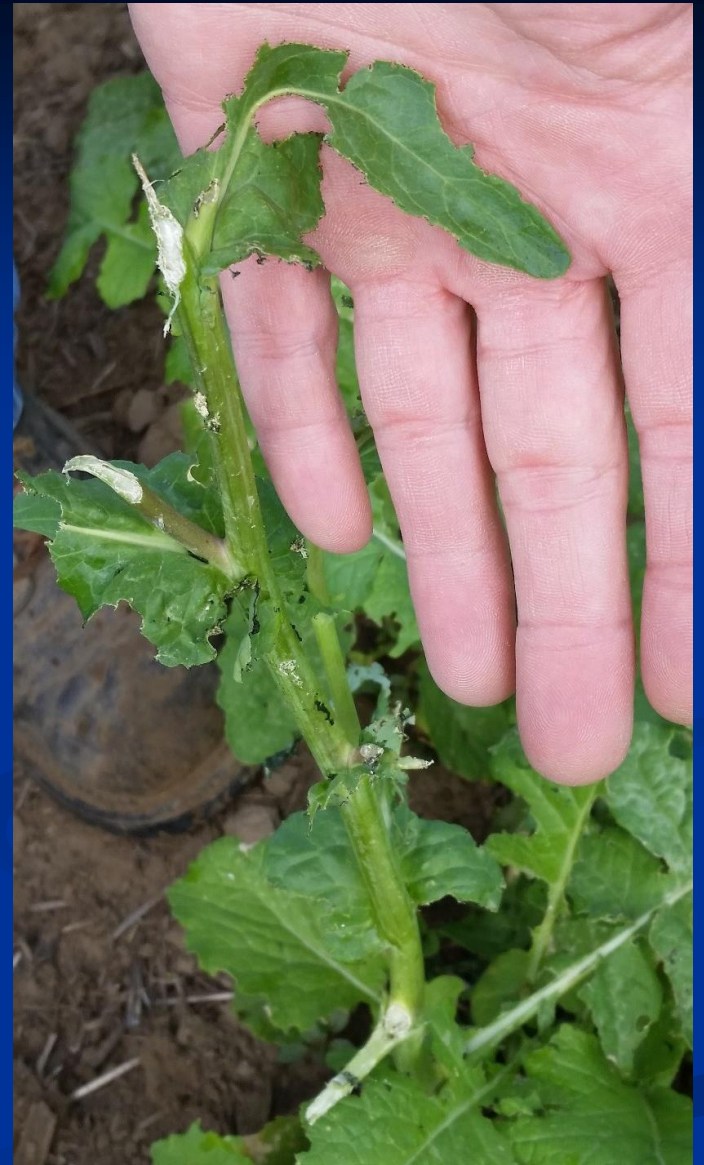


# Insects that are not an issue...

**Blister Beetle**







# Lygus Bug



Adult



Nymph

# Thrips





# Foliar Insecticides

*lambda-cyhalothrin* (Warrior...)

*bifenthrin* (Capture 2EC...)

*zeta-cypermethrin* (*Mustang Maxx...*)

*chlorantraniliprole* , *l-cyhalothrin* (Besiege)

*deltamethrin* (Battalion 0.2 EC...)

*gamma-cyhalothrin* (Declare...)

*flonicamid* (Beleaf 50 SG aphidicide)

*sulfoxaflor* (Transform WG aphidicide)

# Beneficial Insects in Canola





# Beneficial Insects in Canola



**Lacewings**



**Lady bugs**

# Questions?

**Jim Davis**

***jdavis@uidaho.edu***

**208-885-4266**

**<http://www.cals.uidaho.edu/brassica/>**