

CROPLAN

®

2026 CROPLAN® Spring Canola Yield Data



ANYTHING BUT TYPICAL.

CROPLAN



NEW

CP9551TF



SPRING CANOLA

ANYTHING BUT TYPICAL.

CROPLAN

Early TruFlex, Straight-Cut +, Top Yield!

- ### Key Features
- Early Flowering Vigorous Hybrid with great top end yield potential on multiple environments
 - **Excellent shatter scores – among top in whole industry**
 - Medium-short hybrid with very good standability
 - **Very CONSISTENT Hybrid**

- ### Placement
- **First time canola grower approved**
 - Moves well West to East
 - Excellent vigor for heavy trash, cold soils, no-till

Seed Size Range	TBD
Flowering Date	E
Relative Maturity	90-91
Height	M-S
Straight Cut	SC+
Oil Content	2
Vigor	1
Lodging	1
Straight- Cutting	1
Stress Tolerance	1
RTP	TBD
RTN	TBD

Blackleg	Resistance Group	A
	Major Resistance Genes	LepR3
Clubroot Resistance		R

Results are generated from field observations and may change as additional data is gathered. Crop results are dependent on the impact of many factors beyond the control of WinField United including without limitation, reduced performance due to weather, soil variations and may even reflect differences in agronomic practices.



CP9551TF Data

79.3% Win Rate
out of 75 tests in
two years!

One to Many Comparison

Benchmark:

CROPLAN - CP9551TF

Company	Product	Trait	Total Tests	Yield				
				Benchmark Wins	% Wins	Benchmark Mean	Product Mean	Yield Adv.
BASF	LR354PC	LL/RR	14	10	71.4%	2100.7	2083.8	16.9
Croplan	CP9221TF	TF	14	11	78.5%	2100.7	1953.0	147.7
Croplan	CP930RR	RR	14	14	100%	2100.7	1538.2	562.5
Croplan	CP9978TF	TF	14	10	71.4%	2100.7	1880.3	220.4
DeKalb	DK 400 TL	TL	7	5	71.4%	2124.5	1991.7	132.8
DeKalb	DK 902TF	TF	12	10	83.3%	2124.5	1815.9	308.6





CP9221TF



SPRING CANOLA

ANYTHING BUT TYPICAL.

CROPLAN

Early Blackleg with Straight-Cut!

- ### Key Features
- Strong yield with excellent stress tolerance
 - Very good shatter scores and standability
 - Early maturity helps manage workload in timely straight cut systems

- ### Placement
- Better stress tolerance than CP9978TF and CP930RR
 - Earliest tested product; will help beat the heat!
 - Holds yield better than more offensive products at sub-1500 lb environments, responds well to increased pops
 - Responds VERY WELL to LOW POPS

Seed Size Range	90-120k
Flowering Date	E
Relative Maturity	88
Height	M-S
Straight Cut	SC
Oil Content	2
Vigor	1
Lodging	1
Straight- Cutting	2
Stress Tolerance	1
RTP	H
RTN	M

Blackleg	Resistance Group	Multi
	Major Resistance Genes	Multi
Clubroot Resistance		Source A/B

Results are generated from field observations and may change as additional data is gathered. Crop results are dependent on the impact of many factors beyond the control of WinField United including without limitation, reduced performance due to weather, soil variations and may even reflect differences in agronomic practices.



CP9221TF consistently WINS!

One to Many Comparison

Benchmark:	Croplan - CP9221TF
Minimum Tests:	N/A

				Yield				
Company	Product	Trait	Total Tests	Benchmark Wins	% Wins	Benchmark Mean	Product Mean	Yield Adv.
BASF	InVigor LR344PC	TF/LL	24	12	50.0%	2315.8	2320.5	-4.8
BASF	LR354PC	LL/RR	33	17	51.5%	2162.3	2222.4	-60.1
Brett Young	BY 6211TF	TF	12	9	75.0%	2345.2	2225.5	119.7
Brett Young	BY 6217TF	TF	2	2	100.0%	2245.5	1674.0	571.5
Canterra	CS3100 TF	TF	10	7	70.0%	2313.5	2170.8	142.7
Canterra	CS3200 TF	TF	8	5	62.5%	2208.4	2313.4	-105.0
Canterra	CS3000 TF	TF	14	8	57.1%	2457.6	2468.5	-10.8
DeKalb	DK 902TF	TF	28	18	64.3%	2270.5	2234.8	35.7
Dyna-Gro	DG 760TM	TF	19	11	57.9%	2306.3	2241.9	64.4
Dyna-Gro	DG 761TM	TF	6	5	83.3%	2939.3	2612.8	326.5
Integra	7361RC	TF	2	2	100.0%	1385.0	1170.0	215.0
NuSeed	NC155 TF	TF	13	10	76.9%	2486.3	2266.5	219.8
NuSeed	NC471 TF	TF	13	12	92.3%	2486.3	2197.4	288.9
NuSeed	NC527CR	TF	21	13	61.9%	2343.5	2278.3	65.2
Pioneer	P511G	OG	2	2	100.0%	2734.0	2584.0	149.9

CP9221TF has a avg. win rate of 73.5% of 207 head-to-head comparisons.

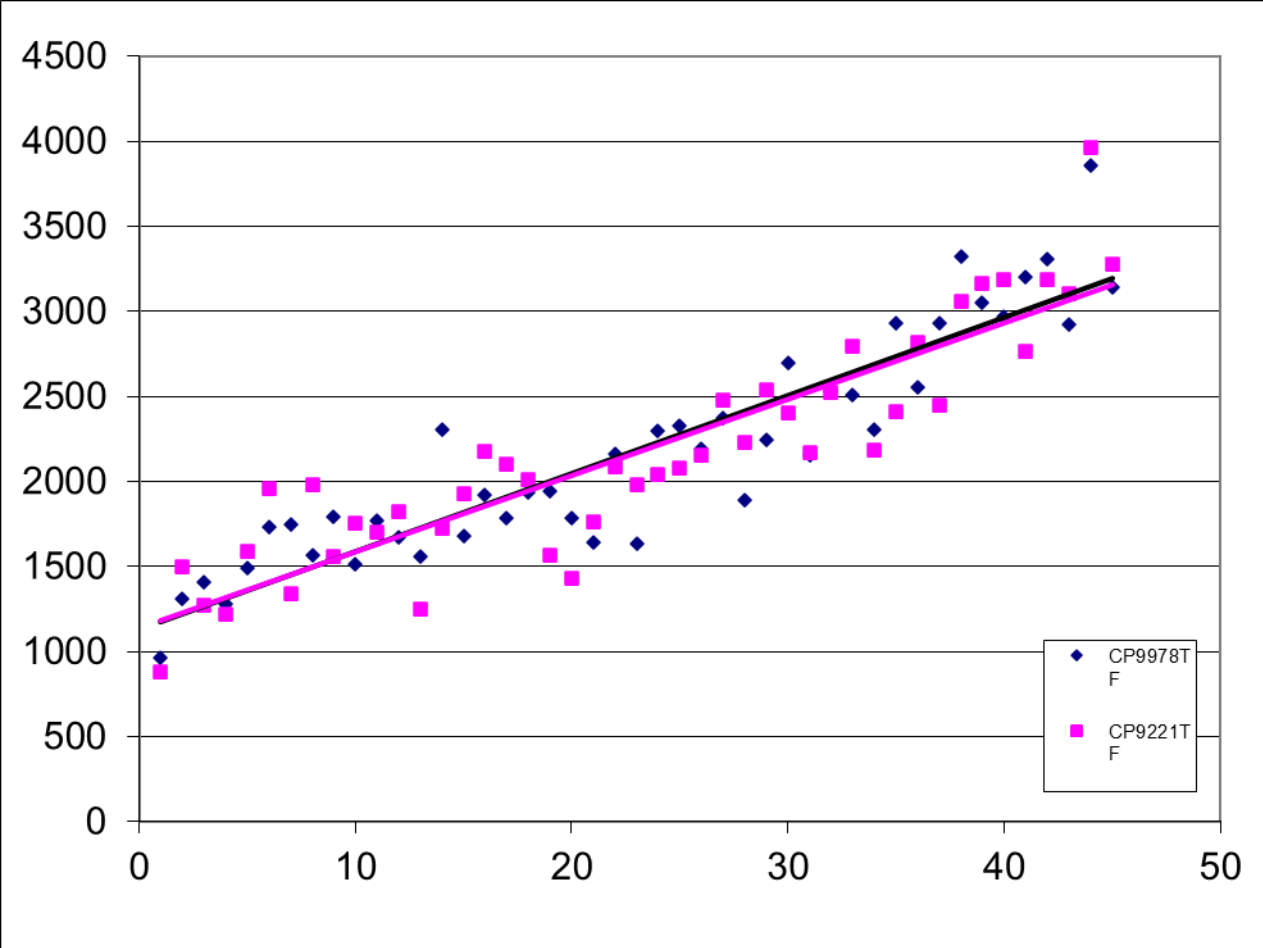
One of the most consistent and strongest TF hybrids in marketplace.

The 207 head-to-head comparisons includes all university and private data.





CP9221TF vs CP9978TF



CP9221TF shows consistent strong yield across multiple environments. CP9978TF trends to have more consistent top end above 2800 lb yield environment.

Head To Head Comparison

Total Tests:	45
Tests in 2021:	4
Tests in 2022:	4
Tests in 2023:	18
Tests in 2024:	19

Company	Product	% Oil	Yield
Croplan	CP9978TF	4347.5%	2180.8
Croplan	CP9221TF	4301.7%	2168.8



CP9978TF



SPRING CANOLA

ANYTHING BUT TYPICAL.

CROPLAN

Straight-Cut, TruFlex, Blackleg & Top Yield!

Key Features

- Consistent big yield potential year after year
- **Excellent shatter scores**
- Medium-short hybrid with very good standability

Placement

- Highest yield potential in cooler, higher yielding environments, responds well to higher pops
- **First time canola grower approved**
- Excellent vigor for heavy trash, cold soils, no-till
- LepR3, RlmS provide enhanced blackleg resistance

Seed Size Range	110-115k
Flowering Date	M
Relative Maturity	92
Height	M-S
Straight Cut	SC+
Oil Content	2
Vigor	1
Lodging	1
Straight- Cutting	1
Stress Tolerance	2
RTP	H
RTN	M

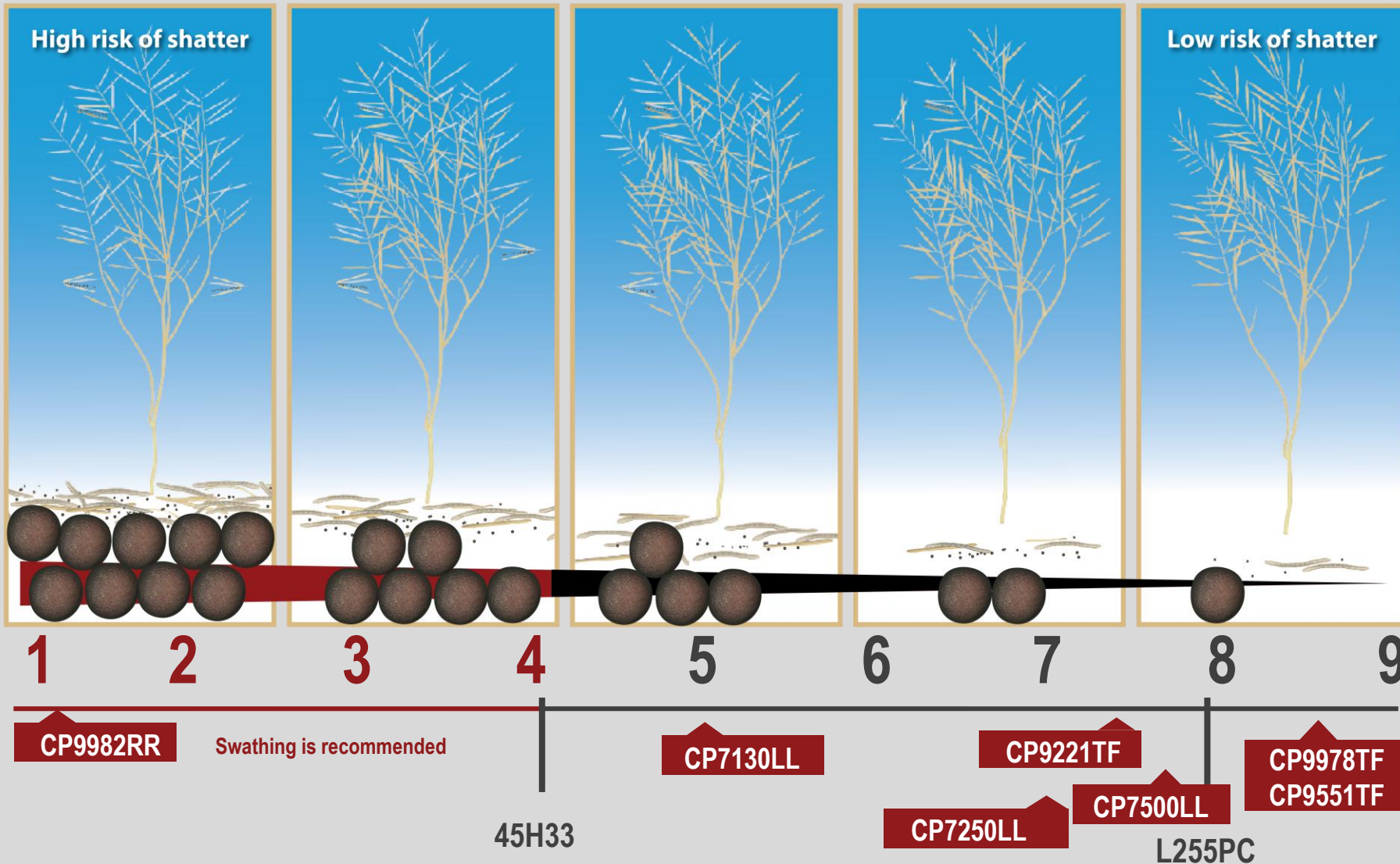
Blackleg	Resistance Group	A, G
	Major Resistance Genes	LepR3, RlmS
Clubroot Resistance		S



CROPLAN + CCC Scores

- **CP7130LL** Timely Straight Cut (5)
- **CP9978TF** Straight cut (Industry Leader) (8.5)
- **CP9221TF** Straight cut. (7.7)
- **CP9551TF** Straight cut. (8.5**)
- **CP7250LL** Straight cut (7) Will see slight shatter under less than ideal conditions
- **CP7500LL** Straight cut 7+**

CROPLAN scores account for both pod shatter and pod drop.
***awaiting 2024 CC Data*



This represents the level of canola shatter risk (which is different from pod drop) in a canola cultivar. Values do not depict a specific percentage of shatter but allow cultivars to be considered relative to the designated checks (45H33 and L255PC) which anchor the numerical/descriptive claim based on the seed provider data. The ratings are not a promise or performance guarantee given the significant environmental effects impacting the trait as described in stewardship documents. Please consult your retailer for recommendations.

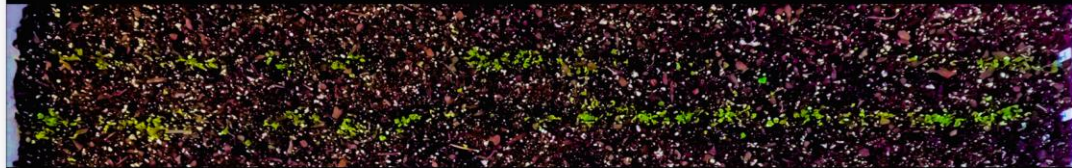
Ascend[®] ST3[™]

A Stronger Start Begins with Ascend[®] ST3

CROPLAN[®] Canola seed treated with Ascend[®] ST3 delivers enhanced early-season performance by promoting stronger root development and improved seedling vigor. Powered by plant growth regulators, Ascend ST3 helps drive faster emergence, more uniform stands, and improved stress tolerance during critical establishment periods. The result is a stronger start that supports improved nutrient uptake, better plant health, and greater yield potential throughout the growing season.

5 Days After Planting

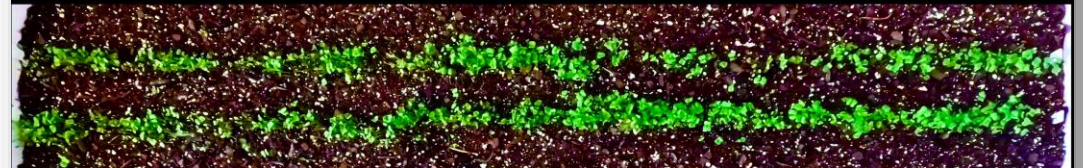
Helix[®] Vibrance[®]



Helix[®] Vibrance[®] + Ascend[®] ST3[™]

9 Days After Planting

Helix[®] Vibrance[®]



Helix[®] Vibrance[®] + Ascend[®] ST3[™]

How should I place TF hybrids in 2026?

- CP9551TF – Key new product that moves well east to west. Is treated with ASCEND ST3, so place on acres that may go in early and on more hostile soils.
- CP9221TF – flagship hybrid across multiple regions. Place on more defensive acres that could have higher probability of being <2500 lb yield environment.
- CP9978TF – consistent and reliable offensive TF hybrid. Place on acres with highest probability of being in >2500 lb yield environment. Great hybrid to use on BIG acres with industry leading shatter.
- My take – use CP9551TF and CP9978TF in combination with CP9221TF to offer a offensive and defensive mix on the farm. Also allows ease of harvest with CP9221TF coming off earlier and strong shatter of CP9551TF and CP9978TF to offer ease of harvest later on.

2026-2027 CROPLAN® Canola Product Rating Chart

CROPLAN	Seed Size Range	Flowering Date	Relative Maturity	Height	Blackleg		Clubroot Resistance	Straight Cut	Oil Content	Vigor	Lodging	Straight-Cutting	Heat/Drought Stress	Response to Population	Response to Nitrogen
					Resistance Group	Major Resistance Genes									
Roundup Ready Canola															
CP930RR	90-120k	E-M	90	S	C	Rlm3	S	-	1	1	1	3	1	M	L
TruFlex Canola															
CP9551TF	90-120k	E-M	90	M-S	A, G	LepR3	Source A	SC+	2	1	1	1	1	TBD	L
CP9978TF	110-115k	M	93	M-S	A, G	LepR3, RlmS	S	SC+	2	1	1	1	2	H	M
CP9221TF	90-120k	E	88	M-S	Multi	Multi	Source A/B*	SC	2	1	1	2	1	L	M
LibertyLink Canola															
CP7667LL	90-120k	M	92	M	Multi	Multi	R - Gene (5); 2F, 3H, 5I, 6M, 8N, 3A, 3D, 2B, 8E	SC+	2	1	1	1	2	TBD	TBD
CP7500LL	90-120k	L	94	M	Multi	Multi	(CR6) 2F, 3H, 5I, 6M, 8N, 3A, 3D, 2B, 11A, 8E	SC+	2	1	1	1	2	TBD	L
CP7130LL	90-120k	M	92	M	Multi	Multi	R-2,3,5,6,9	SC	3	1	2	3	3	M	L
CP7250LL	90-120k	L	94	M	Multi	Multi	R-2,3,5,6,8	SC	2	1	2	2	3	M	L
Rating Scale 1 = Excellent 5 = Poor		E = Early M = Mid L = Late		S = Short M = Medium T = Tall		SC = Product carries shatter and lodging characteristics allowing for success in timely-harvested straight-cut systems SC+ = Straight Cut Plus Technology SC+ integrates a genetic solution that strengthens pod integrity — reducing harvest loss and expanding straight-cut flexibility. *Indicates first (Mendel) and subsequent sources of resistance								L = Low M = Moderate H = High	

